

*Making Real Estate,  
Real Easy.™*



**687 Palmer Court #1  
Incline Village, NV  
\$1,275,000**

**INCLINE VILLAGE REALTY**



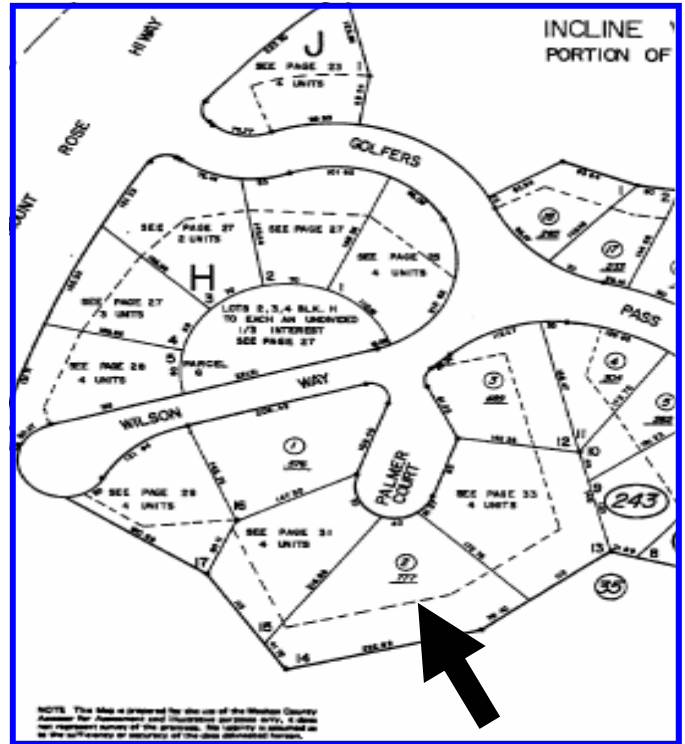
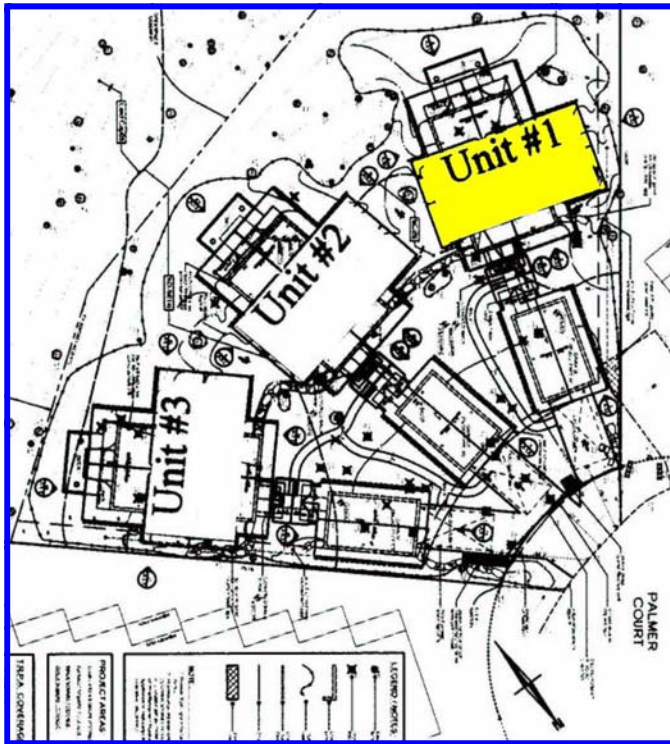
## **New Free Standing Lake View Townhome on Golf Course**

Brand new townhome in Incline Village, Nevada. This free standing unit is located on the Robert Trent Jones Jr. designed Mountain Golf Course. This unit has lake views through the trees and has golf views of the 10<sup>th</sup> hole, 11<sup>th</sup> tee, and 18<sup>th</sup> green. The open floor plans feature high vaulted ceilings in the living area plus a large rock hearth fireplace. The living area opens to spacious rear deck. The dining area is adjacent to a top of the line kitchen with breakfast bar. There is also a half bath and ample laundry room on the main living level. Up one level is the private master suite. The master suite features a large walk-in closet and spacious bath with a spa tub and separate shower. The lower floor features a family closet and a spacious bath with spa tub and separate shower. The lower floor features a family room plus two guest suites with private baths.

**M. Trevor Smith**

**Coldwell Banker Incline Village Realty**  
917 Tahoe Blvd., Suite 202, or P.O. Box 3549, Incline Village, Nevada 89450  
(775) 831-4834 or (888) 882-4632 Fax: (775) 831-4833  
[www.Ttahoe.com](http://www.Ttahoe.com) / E-mail: [Trevor@Ttahoe.com](mailto:Trevor@Ttahoe.com)

# 687 Palmer Court #1



## FEATURES

- Private end of Cul-de-sac location
- Great golf course views of the 10<sup>th</sup> hole, 11<sup>th</sup> Tee, & 18<sup>th</sup> Green of the Incline Village Mountain Golf Course
- Upper level living with vaulted open beamed ceilings and lots of glass
- Gas fireplace in living area with rock hearth
- Two guest suites plus a family room downstairs
- Master suite on its own floor for extra privacy

## DETAILS

- Bed/Bath/Garage: 3/3.5/1
- Approximate square footage: 2,388\*
- Heat: natural gas
- HOA Dues: \$350~
- HOA Transfer fee: \$250~
- Year Built: 2005\*
- Taxes estimate: \$9,000~
- Assessors parcel number: TBD
- Legal Description : Palmer Court



**M Trevor Smith**  
**Direct 775-831-4834 or**  
**888-882-4632**



\* IF SQUARE FOOTAGE IS A CRITERIA OF BUYER (S) DECISION TO BUY, BUYER TO VERIFY  
All advertising if this property is subject to errors, omissions, price change or withdrawal without notice.

Visit us on the Web at:  
[www.Ttahoe.com](http://www.Ttahoe.com)  
E-mail:  
[Trevor@Ttahoe.com](mailto:Trevor@Ttahoe.com)