

*Making Real Estate,  
Real Easy.™*



**910 Southwood Blvd #1, #2 & #3  
Incline Village, NV  
\$839,000 per unit**

**INCLINE VILLAGE REALTY**



## **New Free Standing Townhomes**

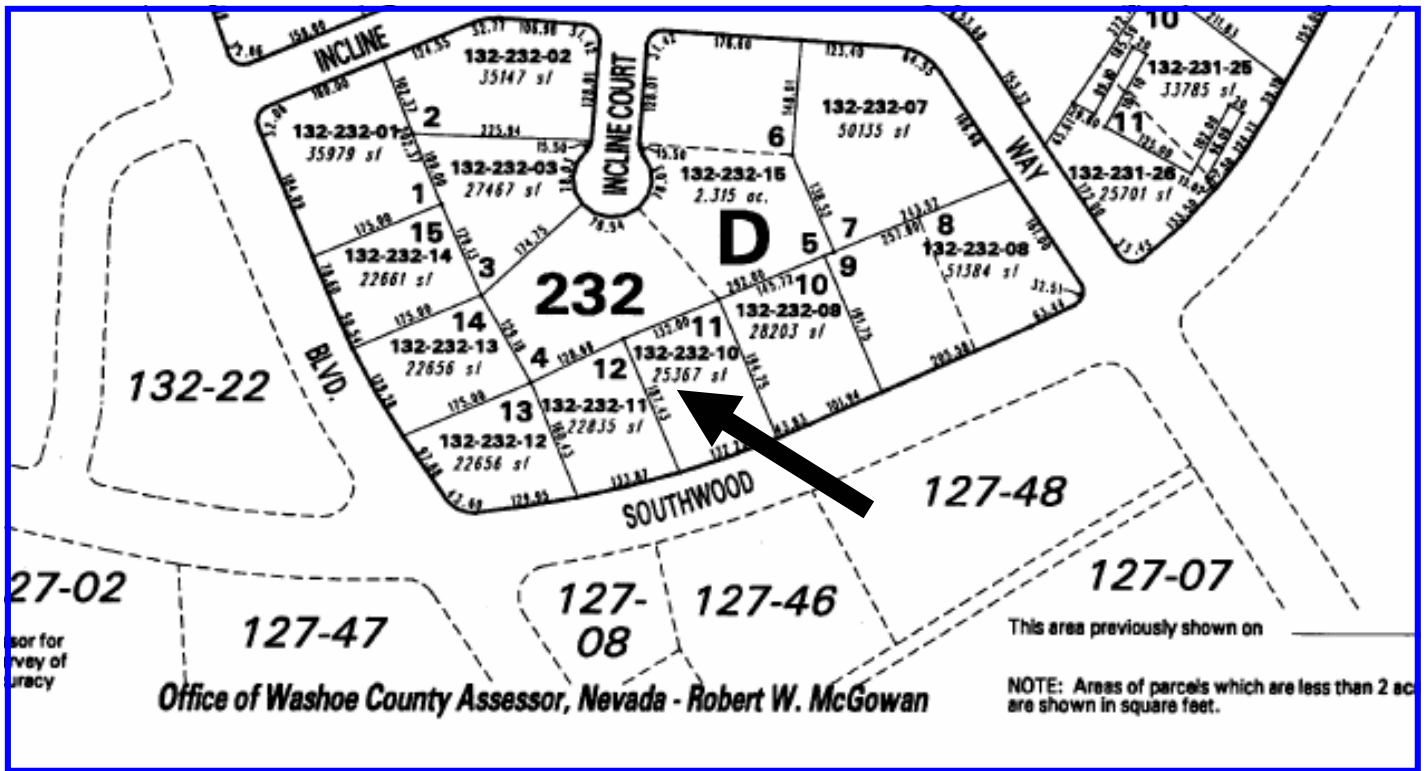
Similar design to Country Club Villas with upgraded finishes! Each freestanding townhouse has 3 bedrooms, 2.5 baths, and an attached two car garage. The second level features a great room floor plan with high vaulted ceilings and a stone fireplace. The open kitchen has a breakfast bar island adjacent to dining & living. The living area has southwest facing windows for afternoon sun, and a sliding glass door opening to a rear deck overlooking the adjacent US Forest Service lot. A powder room is conveniently located off of the main living level. The master suite is also on the main floor and features lots of windows, vaulted ceilings plus a study area and a walk-in closet. The master bath includes a spa tub and a double vanity. The lower floor features an entry foyer with coat closet, two guest bedrooms, full bath with tub shower and a laundry room. Exterior finishes include full wrap cedar siding and composition roofing. Call for additional finish details, floor plans and scheduled completion dates.

**M. Trevor Smith**

**Coldwell Banker Incline Village Realty  
917 Tahoe Blvd., Suite 202**

**P.O. Box 3549, Incline Village, Nevada 89450  
(775) 831-4834 or (888) 882-4632 Fax: (775) 831-4833  
www.Ttahoe.com / E-mail: Trevor@Ttahoe.com**

# 910 Southwood Blvd #1, #2 & #3



## FEATURES

- Backing to US Forest Service lot
- Level access and forest views
- Low elevation easy access location
- Larger plan features 3 bedrooms, 2.5 bath plus sitting room

## DETAILS

- 3 bedrooms, 2.5 baths, 2 car attached garage
- Approximate square footage: 2,010.
- Year Built: 2004/2005\*
- Heat: Natural gas forced air.
- Current taxes: TBD.
- Assessor's parcel number: 132-581-(02—04).
- Legal description: TBA.
- HOA Dues: \$375/month est., Transfer Fee: TBA

**COLDWELL  
BANKER**

**INCLINE VILLAGE REALTY**

**M Trevor Smith**  
**Direct 775-831-4834 or**  
**888-882-4632**



\* IF SQUARE FOOTAGE IS A CRITERIA OF BUYER (S) DECISION TO BUY, BUYER TO VERIFY  
All advertising in this property is subject to errors, omissions, price change or withdrawal without notice.

Visit us on the Web at:  
[www.Ttahoe.com](http://www.Ttahoe.com)  
E-mail:  
[Trevor@Ttahoe.com](mailto:Trevor@Ttahoe.com)